

DESIGN + DECOR

CONNECTICUT
NEW JERSEY
NEW YORK

FOLEY & COX
Prewar Modern
on Park Avenue

THE ANNUAL
KITCHEN ISSUE

\$7.99 US/\$8.99 CANADA



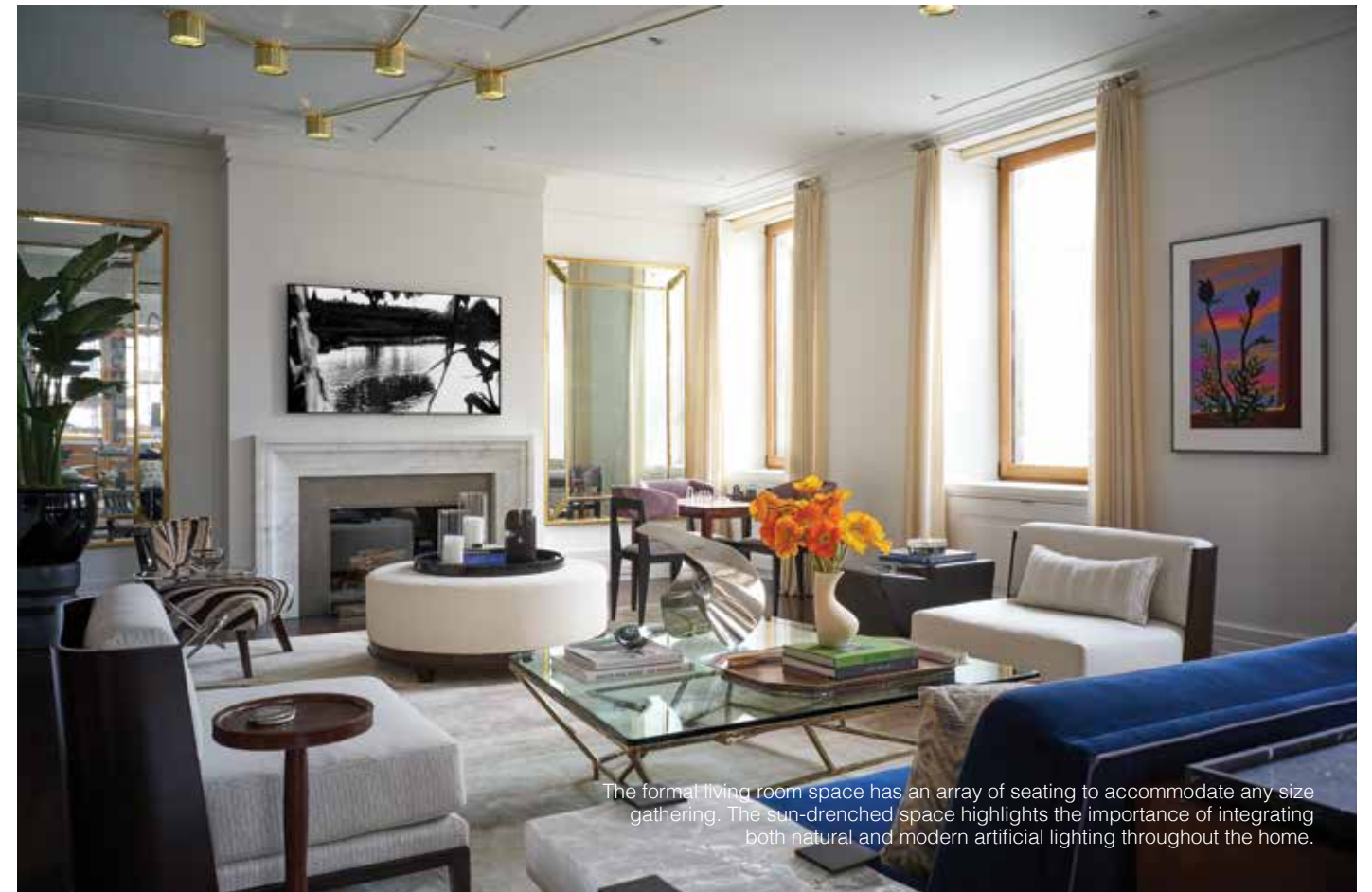
DISPLAY UNTIL 6/10/24
MAR/APR 2024

PREWAR MODERN ON PARK: A Collaboration for the Ages



An outstanding design team works together to integrate two separate apartments into one magnificent dream space for a family.

Story by Danielle Porter | Photography by Bjorn Wallander



The formal living room space has an array of seating to accommodate any size gathering. The sun-drenched space highlights the importance of integrating both natural and modern artificial lighting throughout the home.



In 2015, the design team at Foley & Cox had the opportunity to collaborate with the owners of this apartment on Park Avenue in New York City to transform their “classic six” into a home fit just for them. With two young children, the couple led an active life and wanted the home to support their love for entertaining and spending time together as a family.

The clients were thrilled with the outcome of that effort, so it’s no wonder that, only a few years later, when the family acquired the adjacent apartment, they asked the collaborative team of interior designers foley&cox, architect Douglas C. Wright and contractor Donadic, Inc. to once again partner with them to integrate the two apartments into one and create their ultimate Park Avenue dream home.

For this new venture, the design team expanded to include lighting designer Tirschwell & Co., Inc. and art consultant Delancey and Greene Art Advisory. The synergy that came from this collective as they embarked upon the design of this home is otherworldly, as evidenced by the final product: a home that is “respectful of its classic Park Avenue location and prewar traditions, but updated to reflect a new generation,” as Michael Cox, principal at foley&cox, so eloquently describes it.

Creative Freedom

Wanting to combine the spaces and convert the current open living space into a more formal, classic floor plan with mod-



This home office with a view anchors the end of the living room with ample daylight and custom, built-in bookcases.



The central sitting area in the living room features two organic sofas that encourage conversation around a stone coffee table.



This custom-made rosewood cabinetry from Paris is a stunning feature adjacent to the dining room.



The dining room is classically simple—the epitome of the design aesthetic of the home. A neutral base palette with bold, dimensional art and lighting creates a sense of personality and intrigue in the space.

ern upgrades, the clients put their complete trust in the recommendations of the design team. As the newly acquired apartment hadn't been renovated in nearly three decades, the team was given carte blanche to reimagine it as they saw fit.

Empowered by the clients' trust and the creative freedom to plan the combined home accordingly, the design team envisioned a thoughtful progression of space. Social, entertaining spaces were placed near the entry at the front of the home, while the more private living quarters were placed at the rear, with intentional and noninvasive separation between.

This approach gave the apartment experiential meaning and allowed the team to create the sense that the two apartments had always been one. The layout also gives guests the sense that they are welcomed openly into the entire home, while subtly holding space for only the family to enjoy—the ultimate entertaining home.

Setting the Tone

At the entrance of the home, the simple and sophisticated foyer sets the aesthetic tone for the residence, a neutral backdrop upon which layers of personality and character can be built uniquely into each space. Here, the floor is a classic marble stripe, accentuating the symmetry of the space, which is starkly contrasted by a striking piece of neon art commissioned from Iván Navarro, which doubles as a secret door.

This moment is only the beginning of an immersive and art-infused architectural experience. Indeed, according to Douglas Wright, founder of Douglas C. Wright Architects, this element is a pivotal representation of the collaboration among the team members. "This piece knits together the traditional past and modern present within the home," he says. "It extends the grandness of the foyer experience using a highly artistic piece for a very mundane solution of concealing the entry closet."

Adjacent to the foyer is an expansive, daylight-filled living room space that has been meticulously separated into three sitting areas. These areas are a thoughtful interpretation and microcosm of the home, with more formal, social and "public" space at the front and more casual, personal space at the back.

First, and closest to the foyer, is a classic formal space where the traditional seating arrangement and glossy ottoman align on a central fireplace. The game table anchored in front of the corner window is a weekly point of gathering in the home. Centered in the space is a gentle and fluid seating area, where curving sofas create an intimate conversational space, perfect for cocktail parties with close friends. Anchoring the far end of the space is a tailored, open home office with casual guest seating. Within these three spaces, the immersive art experience continues, as the lighting design is simultaneously a sculptural experience emerging from the ceiling. As Michael Cox explains, this approach with the lighting "delineates zones from modern glamour to sophisticated urban living paired with comfort and functionality."



Fit for a chef, the kitchen space has everything the family could want. The statement island and frosted-glass pendant anchor the space, with white and glass cabinets beyond.



What was once the primary bedroom suite has been transformed into the dining room and the “jewel box”—a built-in bar experience like no other. Connecting the open private office and the dining room, this space supports dinner and cocktail parties perfectly. The materiality is simply inspired. The rosewood bar is custom designed and imported from Paris-based Rinck.

An Artful Experience

The formal dining room is an elegant space with an undercurrent of soft, curving lines that draw the eye through the space. Here, we see the eloquent expression of how art has been incorporated as an inherent component of the design, a testament to how seamlessly the architect, interior designer and art consultant worked together to bring the space to life. The art isn't just meaningfully expanding the family's collection—it's adding to the experience of the home.

The bold azure artwork by Donald Martini is highly dimensional, adding a sense of depth to the space in a color that is in perfect contrast to the white, hand-plastered walls of the dining room. The light fixture by Mathieu Lehanneur is a whimsical piece where light and art converge. Tubes of light seemingly flow in and out of the ceiling, evoking a sense of intrigue.

The kitchen space is crisp and clever in its design. A bold statement island anchors the space, surrounded by white cabinets with sleek glass inlay doors that are perfectly matched to the central pendant fixture. Adjacent to the kitchen is a breakfast nook grounded with a striped, woven leather and coordinating



chocolate leather seat, with an expansive ship's table to fit the whole family. The nook itself offers a view of the more informal living room, perfectly rounding out the more public and social spaces of the home. From here, just beyond the pocket door that stores neatly in the wall, lies the family's personal space, bedrooms and beyond.

The Children's Zone

While the two children's bedrooms stayed in place for the renovation, each received an upgrade reflecting the children's maturation and growth. This was a flawless effort given the intentionality of the neutral backdrop of each room, upon which a bit of personality can be placed with consideration to their individual personalities and interests. Bold colors and oversized artwork are thoughtfully combined to make youthful spaces that can mature as the children continue to grow.

It is here, at the end of the hallway, that another pocket door lies, where walls used to divide the two apartments. This pocket door connection finishes the hallway, making a seamless connection to the children's lounge and study space. Complete with built-in reading nooks with a view, a lounge space and a storage area, it's



The primary suite is accessed through a modern stainless-steel cube element, signaling the transition from the children's lounge to the adults' zone.



Featured in the primary sitting room, the organic sofa, coffee table and artwork are a stunning contrast to the modern cube that the couple enters to access their suite.



This custom glass wall features a variety of five hand-selected mirror styles to create a Mondrianesque feature.



the perfect hangout space for the kids and their friends.

Just beyond is an artful architectural transition from the children's zone to the primary suite. It is an "experience through materiality—a stainless cube passageway, with a rotating door lined in wood panels, which marries modern and transitional design," says Michael, and it creates an intentional transfer between spaces. A peek through the cube offers a view directly through space to an art piece in the primary bedroom beyond.

Where Dreams Come True

The primary suite is an overall composite of geometric and organic elements fusing together to create an experience like no other in the home. The sitting room features a Piet Mondrian-inspired wall that provides the perfect combination of glass and mirror, selected by the collective design team. Here, an organic sofa gently wraps around a sculptural coffee table, creating the perfect scene for morning coffee and conversation. A metallic framed fireplace, artwork in itself, offers a juxtaposition of cold metal against a warm fire, where the couple can wind down over evening cocktails.

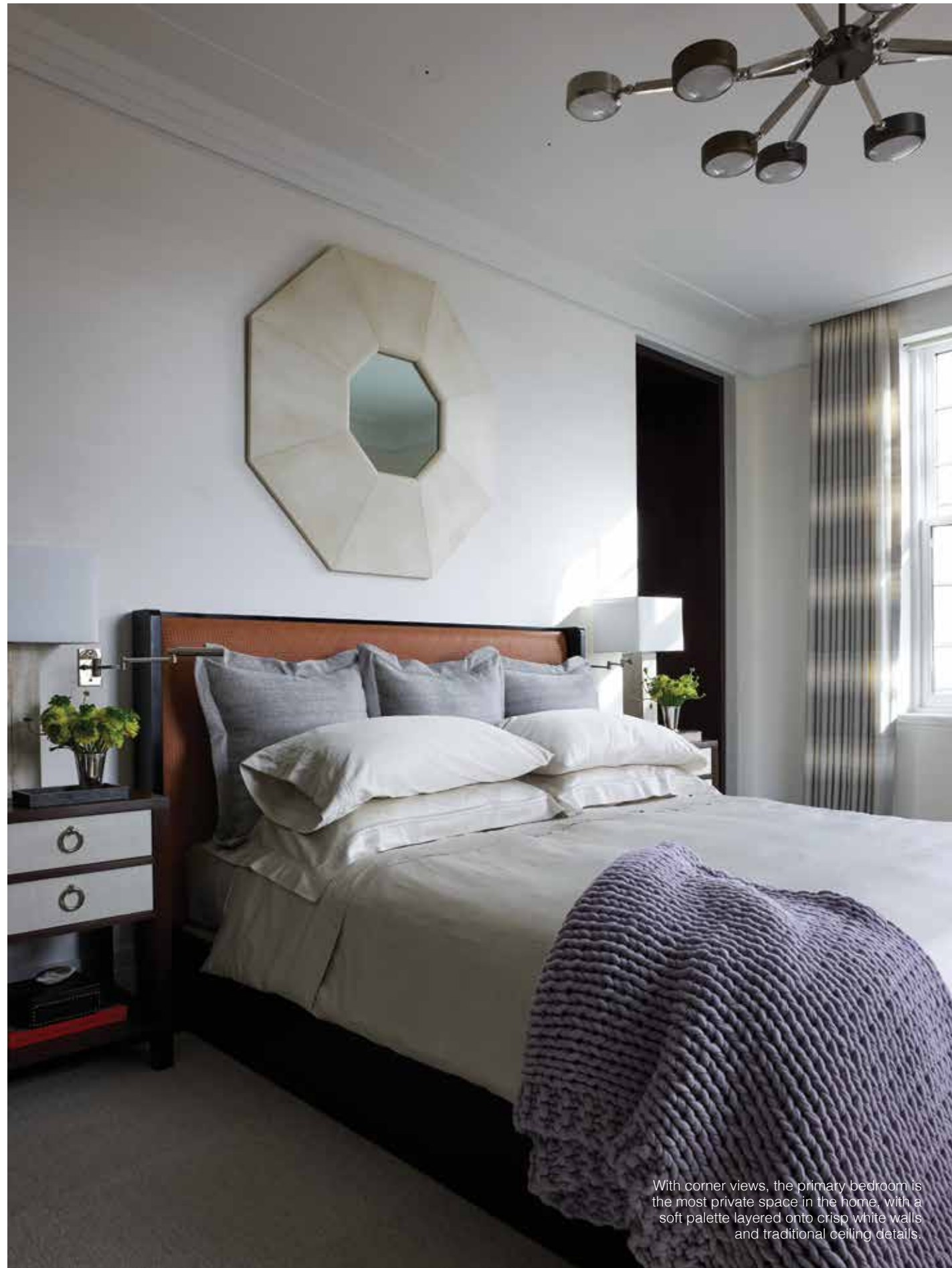
Just beyond the sitting room, behind a pair of wood doors, lies the primary bedroom. This light-filled, bright and airy corner space has the bed anchored on the interior wall, providing a restful retreat with a view. Off the primary bedroom, tucked behind

the last door of the home, lies an unexpected luxury: the ultimate his and hers primary bath and dressing room suite.

Here in the bathroom is an experience to die for. A curated collection of vanilla onyx and white marble clad nearly every surface, reflecting light and luxury everywhere you look. The central, oversized walk-in shower, complete with rain shower head anchored at the ceiling, is enclosed with a beautiful gradient frosted glass flanked by his and hers vanities in cerused oak.

These softly curved vanities define a zone for each person, and the mirrors reflect the Mondrianesque glass wall in the sitting room, adding depth and detail to the space. Each exquisite vanity is paired with its own private toilet room, the ultimate in his and hers. The space is finished off with an extensive dressing room and behind-the-scenes closet space—the stuff of New York City dreams!

Collectively, this home is a thoughtfully curated experience that artfully respects the traditional prewar design characteristics and integrates the best of modern beauty and convenience. It is a shining example of the indescribable excellence that comes to life from the collaboration of diverse and brilliant minds who brought their expertise and A-game to this design, merging their skills impeccably to create the dream space that this family calls home.



Resources:

Interior Design:
 Foley & Cox
 Michael Cox
 231 W 29th Street #707
 New York, NY 10001
 212.529.5800
 foleyandcox.com

Architect:
 Douglas C. Wright Architects
 Douglas C. Wright
 1261 Broadway #400
 New York, NY 10001
 212.343.0034
 dcwarchitects.com

Contractor:
 S. Donadic, Inc.
 Johnny & Steve Donadic
 45-25 39th Street
 Long Island City, NY 11104
 718.361.9888
 donadic.com

Art Consultant:
 Delancey and Greene
 Liz Sterling
 Chapin Carson
 Jordan Pieper
 980 Madison Avenue Third Floor
 New York, NY 10075
 212.535.5096
 Delanceyandgreen.com

Lighting Design:
 Tirschwell & Co.
 Matthew Tirschwell
 David Burya
 21 W 39th Street
 New York, NY 10018
 212.563.0994
 t-ld.com

Millwork:
 Rinck, Inc.
 Valentin Goux
 200 Lexington Avenue, Suite 422
 New York, NY 10016
 rinck.fr